

WAsP software installation guide

Distribution of WAsP applications

The installation packages for WAsP and WAsP Engineering are distributed via the WAsP web site www.wasp.dk.

System requirements

The WAsP software will work with Windows 2000, Windows XP (home and professional), Windows Vista and Windows 7, installed on a reasonably-specified PC bought within the last couple of years.

Downloading from the Web

The latest releases of the WAsP software are freely available from the "Download | WAsP" section at www.wasp.dk. Installation files for the following program packages are available:

- WAsP Licencing System 2
- WAsP 10
- WAsP Engineering 2
- WAsP 10 Map Editor
- WAsP Climate Analyst 1.1

Installation files are standard MSI (Windows Installer) files contained in zip archives, from which you must extract them after downloading. See reverse side for details.

The WAsP common distribution disk

If you cannot download the files, you may request the installation packages on a CD-ROM. The CD-ROM contains the same five installation files as the WAsP web site.

Storing the installation files

We recommend in any case that you make and keep copies of the MSI files on your PC's local hard drive – preferably in a dedicated "installer folder" – and that you use these local files when installing. This will ensure immediate access to the installation files in case of subsequent installation upgrades or set-up changes.

A suitable WAsP installer folder could be "\\WASP\Installers", created for the purpose in the common user profile "C:\Documents and Settings\All users". See reverse side for details.

Running the setup programs

Starting with the WAsP Licence System, run each of the five installations by double-clicking on the MSI files, and follow the instructions. Please note that the WAsP Licencing System must be installed in order to allow the WAsP programs to run as licenced applications.

Upgrading from WAsP version 8 to 10

We suggest that you un-install WAsP 8.4 and the corresponding Map Editor before running the WAsP 10 installations; but if you prefer, installing WAsP 10 without uninstalling WAsP 8.4 is perfectly safe as well: the two programs will run together without interference. You can remove WAsP 8.4 (and the corresponding Map Editor) later, but make sure that you have access to the WAsP 10 installation MSI files when you un-install WAsP 8.4.

Upgrading from WAsP version 9 to 10

WAsP 9 and 10 cannot coexist on your PC. Therefore, you must un-install any WAsP 9 before running the WAsP 10 installation.

Install as an administrator

You must have administrator rights to the Windows system to perform the installation.

You can choose to install the software for all users of the computer, not just yourself. If you do, then the software will be configured separately for additional users when they first run it. At this point there must also be access to the WAsP 10 installation MSI files.

Each user needs separately to set up a WAsP licence under their account, also if a common WAsP licence is shared by all the users.

A note for WAsP Engineering users

If you have an old WAsP Engineering version installed, please install version 1.2 or 2.0 before installing WAsP 10, because there is a risk of some incompatibility between WAsP Engineering 1.0 and WAsP 10. Get the latest release of WAsP Engineering from the "Download | WAsP" section at www.wasp.dk or from the common CD.

Problems?

Check the known issues list and FAQ at the WAsP web site www.wasp.dk.

Or, e-mail us for technical help and advice at wassupport@risoe.dk. This requires a valid WAsP support agreement.

Risø DTU
Wind Energy Division
P.O. Box 49, VEA-118
DK-4000 Roskilde
Denmark

Phone +45 4677 5097
Fax +45 4677 5970
wasp@risoe.dk
www.wasp.dk
www.windatlas.dk
www.risoe.dtu.dk

Visiting address
Frederiksborgvej 399
Roskilde • Denmark

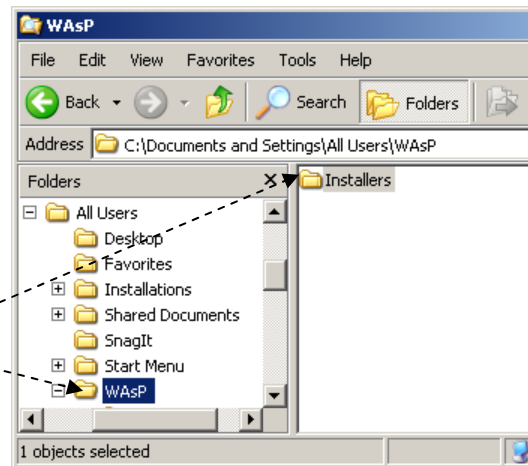
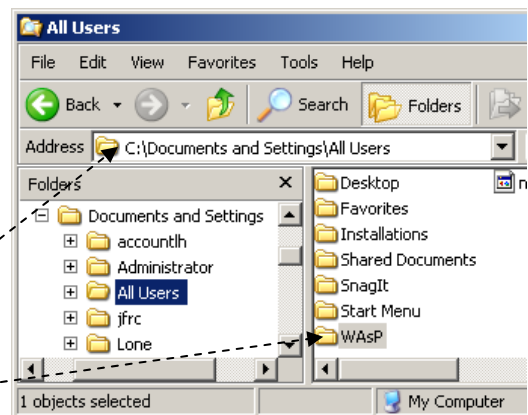
Technical details

How to create the WASP installer folder

The *installer folder* to create is:

"C:\Documents and settings\All users\WASP\Installers"

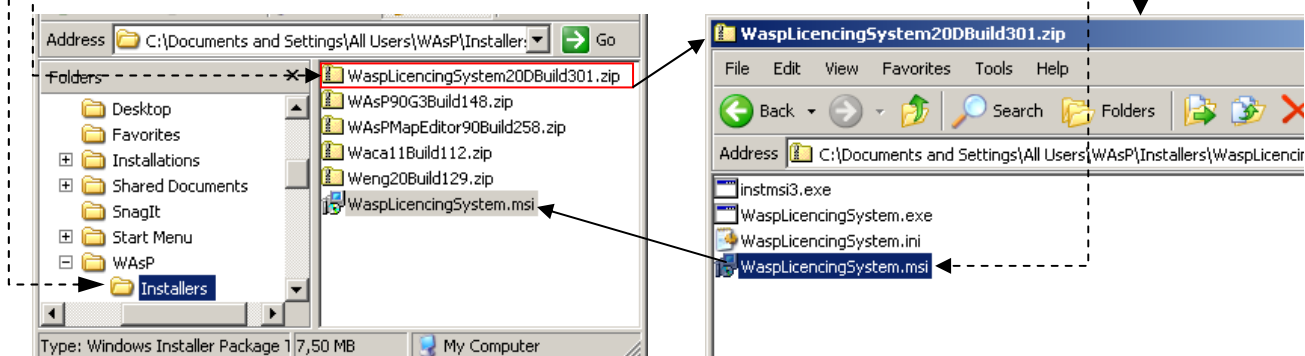
- a. Use Windows Explorer
- b. Go to the systems folder
"C:\Documents and settings\All users"
- c. In that folder, create a new folder "WASP"
 - o Right-click in the right-hand pane to bring up a pop-up menu.
 - o Select the option **New**, and in the submenu select the option **Folder**.
 - o Set the name of the new folder to the wanted name – in this case "WASP".
- d. Go to this WASP folder
- e. In the WASP folder, create a new folder "Installers"



When you download the installer zip-archives, download them to this installer folder.

How to extract an MSI installer file from the ZIP-archive

- A. Use Windows Explorer
- B. Go to the folder containing the installer zip-archive (the *installer folder*)
- C. For each of the zip-archives, double-click on the zip-archive.
This will make a zip-archive window appear.
- D. From the zip-archive window, drag the MSI installer file out to the *installer folder*.



The MSI installer files are now ready to be executed to perform the actual installation.